



## Remote Link 2008

### QUICK START GUIDE

#### Installing the Software:

- Insert the disc into your CD drive. The installation wizard should begin automatically.
- If the installation does not begin automatically, select **Run** from the **Start** menu, browse to your CD drive and select **Setup.exe**.
- Follow the prompts in the wizard until installation has completed.
- Remote Link 2006, if installed, will be replaced.

#### Minimum System Requirements:

- Microsoft Windows 98 / 2000 / XP / Vista. Other operating systems are not supported.
- Approx. 10 MB of hard disk space.  
Note: If Microsoft .NET 2.0 Framework is not already installed then approx. 100 MB of additional disk space will be required.
- 166 MHz or faster processor.
- 64 MB RAM
- Serial COM Port
- Either an external modem or a "null modem" (crossover) serial cable

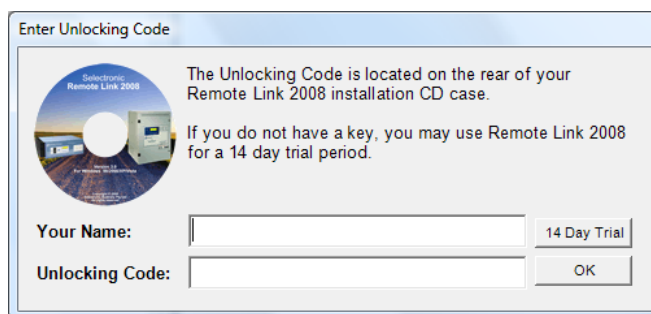
#### Recommended System:

- Microsoft Windows 2000 / XP / Vista
- Pentium 3, 1000 MHz or greater
- 800 x 600 or greater display area
- 256 MB RAM
- NetComm Roadster (AM5698) modem

#### Using Remote Link 2008 for the first time:

Remote Link 2008 installs by default into the following menu: Start > All Programs > Selectronic

The first time Remote Link is run, you must enter the unlocking code, found on the rear of the CD case. This requires local administrator permissions.



#### Defining Sites:

Defining sites allows you to specify various inverters, and easily connect to each on demand.

**Define Sites** is found in the **Communications** menu. The first time you start Remote Link, there are no sites defined, so you will be presented with a dialog prompting you to enter details for your first site.

Each site has a unique name. Type a descriptive name for the connection, e.g. Fred's Farm, or Direct if you are connecting to the inverter through a Null Modem cable (as opposed to using a modem).

**Download Folder:** You should specify a unique folder where all downloads for this site will be located. If a folder already exists, you may browse to it.

Choose the correct COM port for your connection. See **Finding the right COM Port** later in this guide.

Enter the correct details for your inverter and modem.

#### Direct Connections:

It is critical that a **Null Modem** cable be used when connecting directly to the inverter, whether or not a USB to Serial adaptor is also used.

#### Connecting to the site:

From the **Communications** menu, depending on whether you are making a dialled or direct connection, select either **Open Port for Direct Connection** or **Dial Phone to Site**,

If you are connecting via a modem, it may take a minute to connect. Progress is displayed in the Status bar.

Once connected, you can control your inverter.

#### LCD mode for SA Series Inverters:

Sessions to SA inverters always begin in LCD mode.

Remote Link will display the same detail that is shown in the front panel of the inverter.

Use the Remote Link buttons to control the inverter as you would use the Energy Management Mk II Remote Keypad.

#### LCD Mode for PS1 Family of inverters:

PS1 inverters will usually be idle upon initial connection.

LCD mode is supported only once Remote Link has determined the version of inverter, which it will attempt to do upon that initial connection,

Once this has completed, you may start LCD mode.

To start LCD mode, simply select **LCD Mode** from the **Inverter** menu. The screen will be a typical "LCD green" when in LCD mode.

Note that LCD Mode is not available in any of the PSA range of inverters.

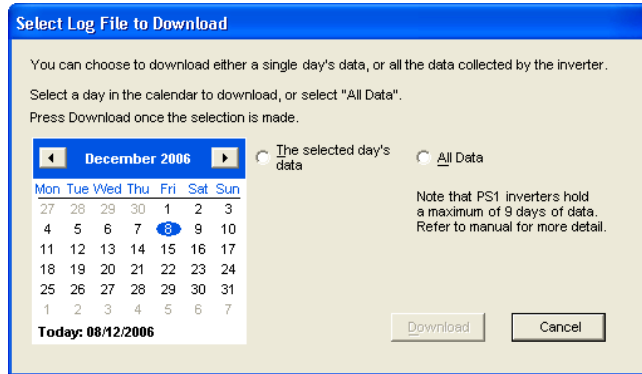
## Downloading data from the inverter:

Select **Download Data** from the **Inverter** menu.

For SA series inverters select one of the download options.

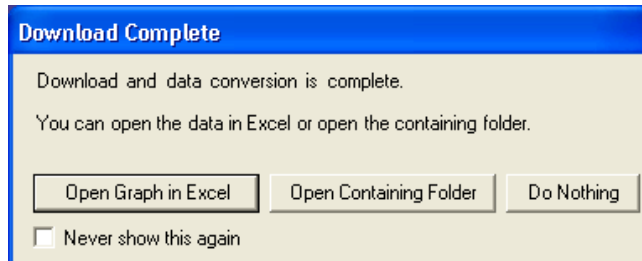
Each file will give you data for the past 28 days.

For PS1 / PSA inverters, you have the option of any one date, which you can pick off the calendar, or to download all available data.



**Selected Day** will take around 50 seconds to transfer, while **All Data**, will take approximately 5 minutes.

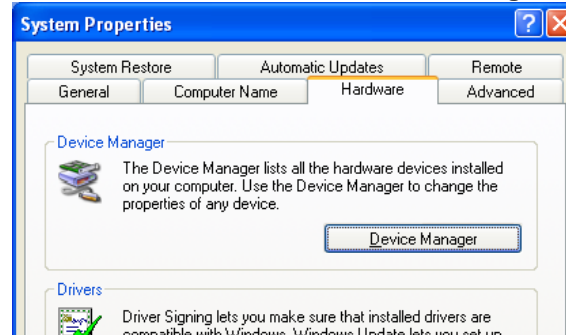
After download is complete, you may open the data spreadsheet. Remote Link will attempt to open the document using Microsoft Excel.



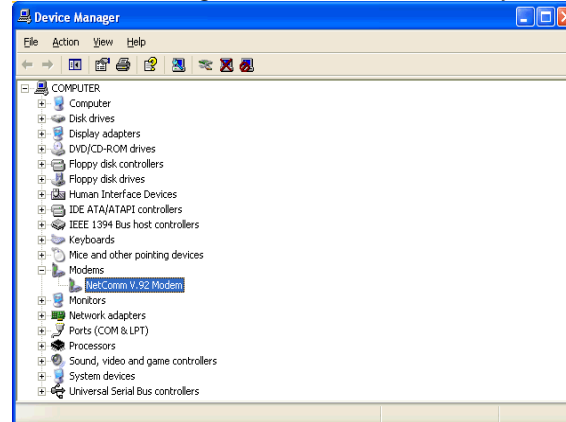
## Finding the right COM Port:

From the Control Panel, select **System**.

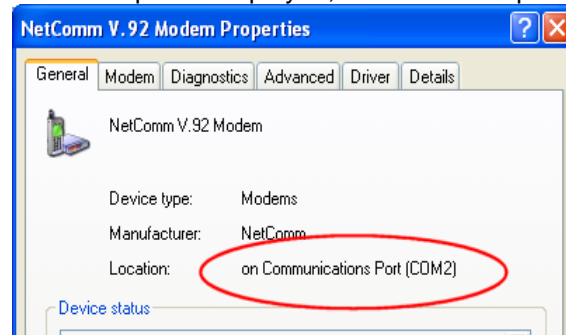
In the **Hardware** tab, select **Device Manager**.



In Device Manager, find and double click your modem



The COM port is displayed, as in the example below:

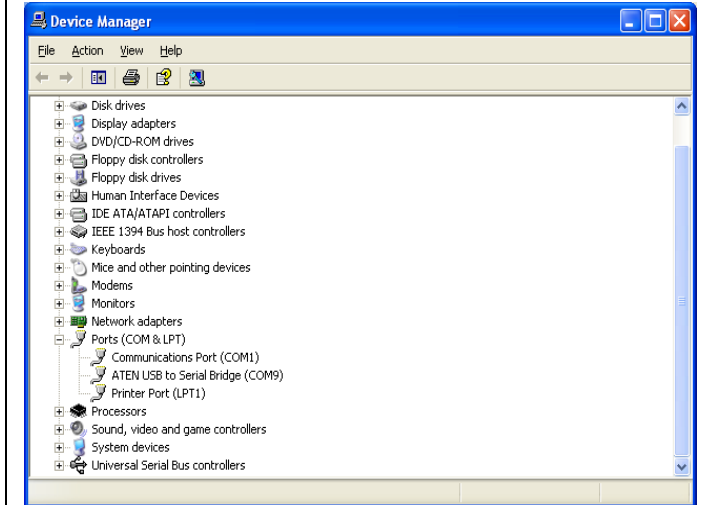


## Using a USB to Serial adaptor:

Many portable computers no longer offer external COM ports, so an external USB to serial adaptor may be required.

Remote Link's **Edit Sites** dialog box displays only ports actually installed so a new COM device number can easily be detected. It will usually be the highest COM number installed.

If necessary, the new COM can also be found in Device Manager.



**Note that a USB to Serial adaptor will be issued a different COM when plugged into a different physical USB port. Take care to reuse the same USB port, or Remote Link may attempt to use an invalid COM.**